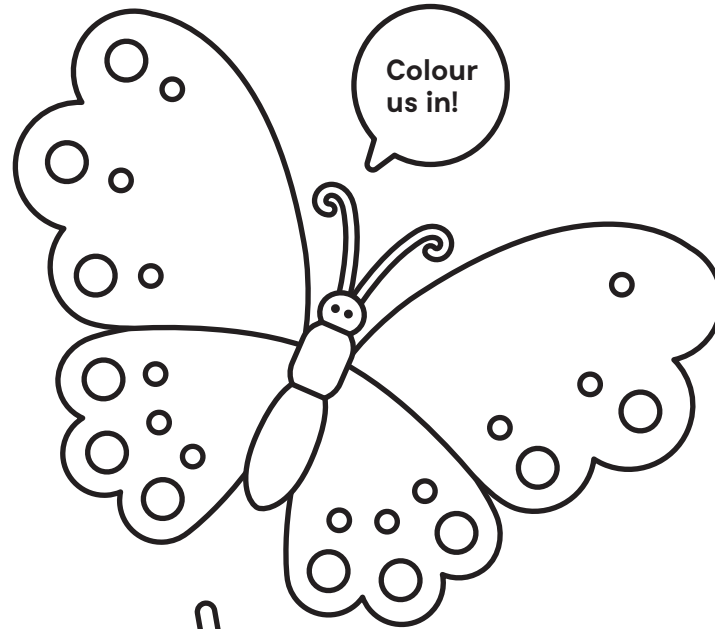
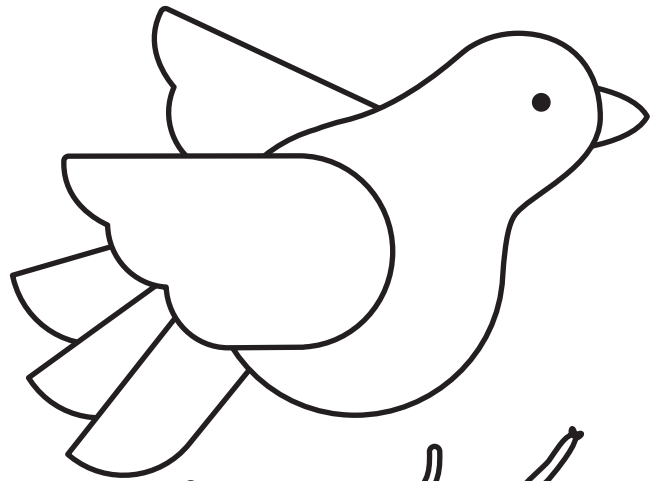


# Spot the wildlife

Many of the sculptures along the trail are also the homes of beasties and birds.



Look up and see if you can spot any fluttering or flitting in and out of the bird boxes. Here, robins, blue tits, sparrows or starlings may be making their home sweet home.

Seek out the Ladybird Hotel. It provides welcoming nooks and crannies to keep ladybirds warm over winter.

Peek into the burrowing holes. They're available for the nesting and hatching needs of bees and wasps known as 'renters'.

**Which other bugs did you spot?**  
Draw them here...

